

INSTALLATION INSTRUCTIONS

KWYET ATLA PENDANT WITH P1CBX HANGING SYSTEM

These instructions cover the ATLA luminaire with the following options:

SERIES	HANGING SYSTEM	SIZE	LIGHT SOURCE	CONTROL	WIRE DIAGRAM
AA2 AA3	P1CBX: PENDANT WITH SURFACE MOUNT CANOPY, SINGLE WHITE (P1CBW) OR BLACK (P1CBB) POWER CORD; MOUNTS TO 4X4 OCTAGON J-BOX (BY OTHERS)	6"	STATIC WHITE	DM1: 0-10V DIM 1%	WIRE DIAGRAM ON PAGE 7

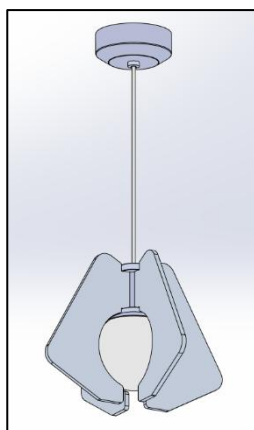


FIG. 1 – AA2-P1CBX-6-XX-GW-XXX-XXX-LEDX_XXK-UNV-XXX-DM1-XXX (AS SHOWN)

GENERAL NOTES:

- PLEASE COMPLETELY READ THE INSTALLATION INSTRUCTIONS BEFORE STARTING INSTALLATION.
- TURN OFF POWER TO CIRCUIT FIXTURE WHILE IT IS BEING INSTALLED.
- INSTALL IN ACCORDANCE WITH ALL LOCAL, STATE AND NATIONAL CODES CONSULT WITH A QUALIFIED ELECTRICIAN FOR PROPER INSTALLATION.
 -CE PRODUIT DOIT ÊTRE INSTALLÉ SELON LE CODE D'INSTALLATION PERTINENT, PAR UNE PERSONNE QUI CONNAÎT. CONSULTER UNE ÉLECTRICIEN QUALIFIÉ POUR VOUS ASSURER QUE LES CONDUCTEURS DE LA DÉRIVATION SONT ADÉQUATS.
- CAREFULLY UNPACK ALL CONTENTS; SOME COMPONENTS MAY HAVE BEEN SHIPPED IN SEPARATE BOXES MOST FIXTURES ARE SHIPPED PARTIALLY ASSEMBLED. SOME UNASSEMBLY MAY BE REQUIRED FOR INSTALLATION.
- FIXTURE POWER CORD WIRES ARE LOW- VOLTAGE. DO NOT CONNECT TO LINE VOLTAGE OR DAMAGE TO THE FIXTURE WILL OCCUR AND WARRANTY WILL BE VOIDED.
- DO NOT LET THE ATLA LUMINAIRE HANG FREE UNTIL THE CORD IS PROPERLY SECURED.
- DUE TO A CHANGE IN NEC SECTION 410.69 EFFECTIVE IN 2022, THE COLOR PINK WILL BE USED IN PLACE OF GRAY FOR 0-10V CONTROL. NOTE THAT EXISTING SYSTEMS AND FIXTURES MANUFACTURED PRIOR TO 2022 MAY STILL USE GRAY WIRE AS AN UNGROUNDED CONDUCTOR FOR 0-10V CONTROL. CARE SHOULD BE TAKEN WHEN WORKING ON EXISTING SYSTEMS.

OCL Architectural Lighting

Phone: 314.863.1895
 Fax: 314.863.3278
www.ocl.com

Table of Contents

GENERAL INFORMATION:	3
MOUNTING:	4
ATLA MOUNTING:	4
WIRE DIAGRAM:	7

XXX-P1CBX-LED-INSTALLATION-INSTRUCTIONS

GENERAL INFORMATION:

You will receive the following with each ATLA series pendant fixture:

1. REFLECTOR ASSEMBLY with CORD attached. (shown in FIG. 2)
2. ACRYLIC GLOBE. (shown in FIG. 3)
3. ACOUSTIC HOLDER ASSMEBLY (shown in FIG. 4)
4. ACOUSTIC FINS (shown in FIG. 5)
5. INSTALLATION INSTRUCTIONS (shown in FIG. 6) - Please completely read the install instructions before starting installation.
6. RED BAG (shown in FIG. 6) contains below following items:
 - a. CANOPY SUBASSEMBLY (as shown in FIG. 7)
 - b. STRAIN RELIEF (as shown in FIG. 8)

WARNING: Examine all components for any damage before beginning installation.

WARNING: This fixture should be installed by a licensed electrician only.

WARNING: Be careful not to scratch or damage any finished parts.

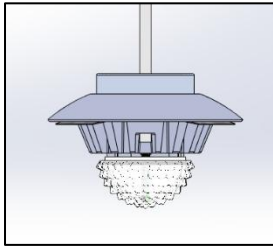


FIG.2 REFLECTOR ASSEMBLY
(PRE-ASSEMBLED)

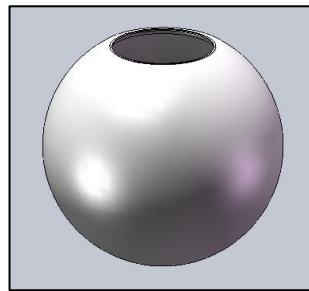


FIG.3 ACRYLIC GLOBE

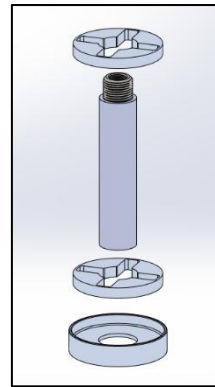


FIG.4 ACOUSTIC HOLDER
ASSEMBLY

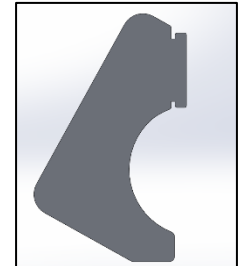


FIG.5 ACOUSTIC FIN

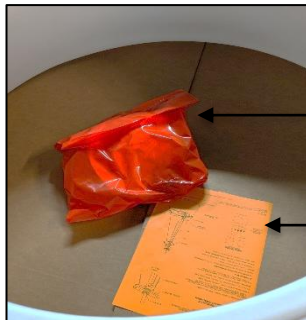


FIG.6 RED BAG AND
INSTALLATION INSTRUCTIONS

RED BAG

INSTALLATION
INSTRUCTIONS

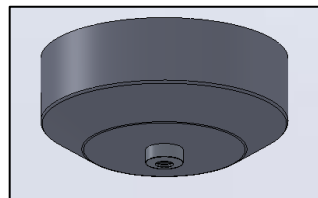


FIG. 7 - CANOPY SUBASSEMBLY

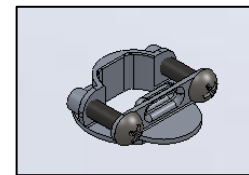


FIG. 8 - STRAIN RELIEF

OCL Architectural Lighting

Phone: 314.863.1895

Fax: 314.863.3278

www.ocl.com

XXX-P1CBX-LED-INSTALLATION-INSTRUCTIONS

MOUNTING:

ATLA MOUNTING:

1. Loosen the CANOPY FINIAL and remove CANOPY. Be careful not to scratch finish as shown in FIG. 9.
2. Unscrew the KNURLED NUT securing MOUNTING PLATE to driver MOUNTING BRACKET. Swing driver mounting bracket down and out of the way as shown below in FIG. 10.

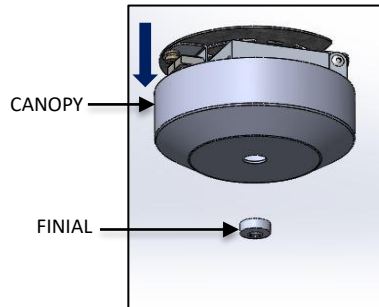


FIG. 9 – CANOPY DIS-ASSEMBLY

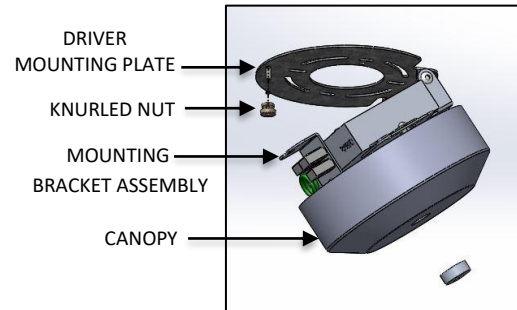


FIG. 10 – MOUNTING PLATE DIS-ASSEMBLY

3. Attach MOUNTING BRACKET to JUNCTION BOX (by other) as shown below in FIG. 11.

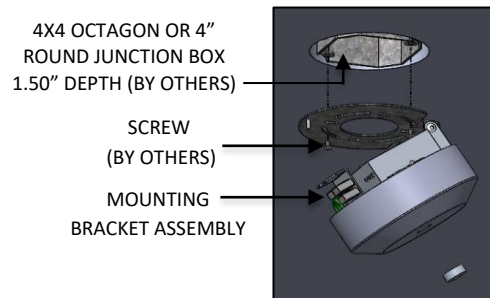
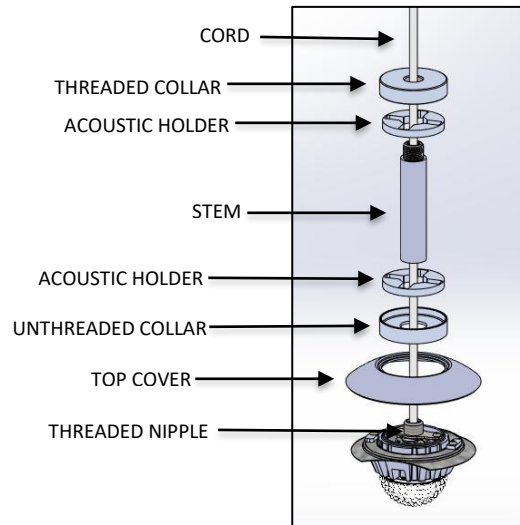
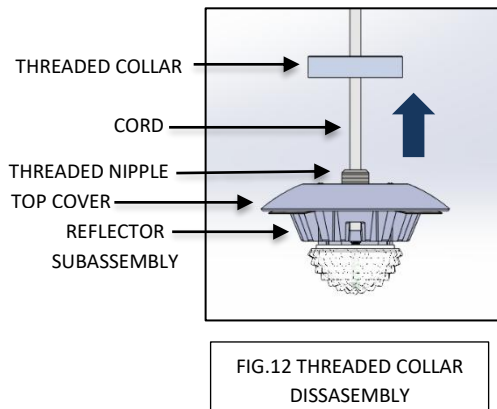


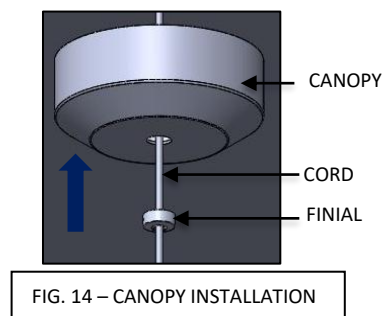
FIG. 11 – MOUNTING BRACKET
ASSEMBLY INSTALLATION

XXX-P1CBX-LED-INSTALLATION-INSTRUCTIONS

4. Unscrew and fully remove the THREADED COLLAR from the THREADED NIPPLE and CORD as show in FIG. 12.
5. Feed the cord through the ACOUSTIC PANEL HOLDER ASSEMBLY in the order shown in FIG. 13. Ensure the deeper recess of the UNTHREADED COLLAR is facing up and will hold the ACOUSTIC HOLDER. Ensure THREADED COLLAR recess is facing down.
6. Screw the STEM onto the THREADED NIPPLE of the REFLECTOR ASSEMBLY. Be careful not to scratch the finish with the ACOUSTIC HOLDERS.

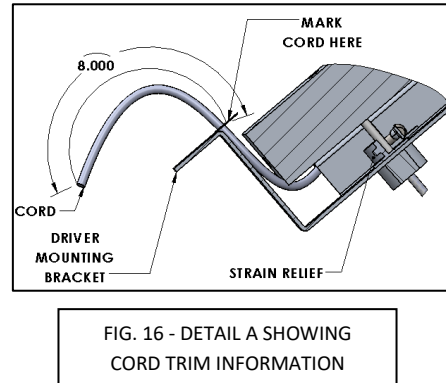
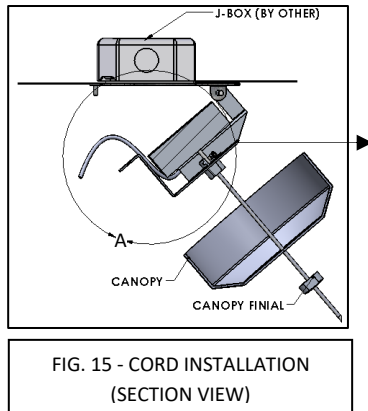


7. Raise the ATLA FIXTURE to ceiling and feed the CORD through FINIAL and CANOPY as shown in FIG. 14. Ensure FINIAL is in correct orientation.



XXX-P1CBX-LED-INSTALLATION-INSTRUCTIONS

8. Pass the cord through MOUNTING BRACKET as shown below in FIG. 15. Adjust fixture drop to desired height. Mark cord with marker inside of DRIVER MOUNTING BRACKET as shown below in FIG. 16. Trim off excess cord leaving minimum of 8.00" past the top of the DRIVER MOUNTING BRACKET all thread for wire connections.



9. Insert cord through the STRAIN RELIEF so the flat side sits against MOUNTING BRACKET and tighten screws until there is a gap of .063" - .095" between the strain relief body and compression plate (as shown in FIG. 17) above hanging bracket where marked. If screws are not properly tightened cord could slip through the strain relief, causing the fixture to fall.

WARNING:



Do not let the ATLA LUMINAIRE hang free until CORD is secured.



FIG. 17 – STRAIN RELIEF WITH CORD INSERTED

XXX-P1CBX-LED-INSTALLATION-INSTRUCTIONS

10. Make wire connections between Building Supply and Fixture Cord inside the junction box (by others) in accordance with the National Electrical Code and all applicable Local and State codes. See WIRE LABEL TABLE and WIRE DIAGRAM as shown in FIG. 18 and FIG. 19

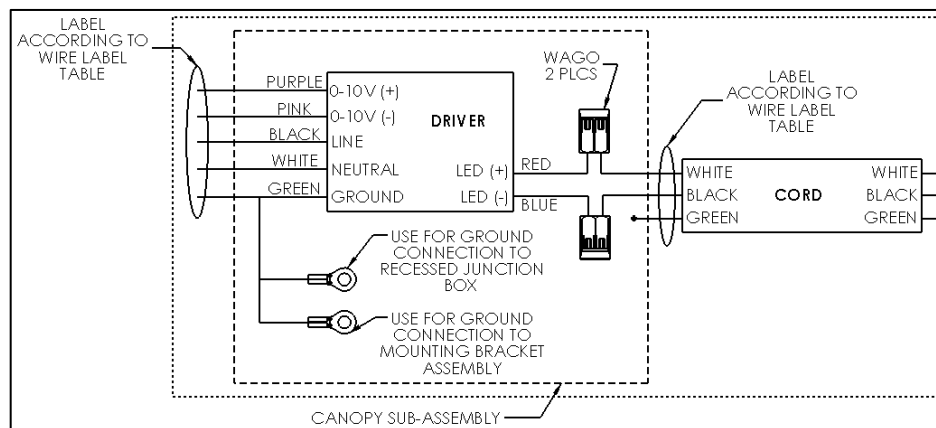
NOTE: Fixture power cord is low voltage. Do Not connect to line voltage. Failure to do so will damage fixture LED and void warranty.

SERIES	HANGING SYSTEM	SIZE	LIGHT SOURCE	CONTROL	WIRE DIAGRAM
AA1 (ATLA)	P1CBX: PENDANT WITH SURFACE MOUNT CANOPY, SINGLE WHITE (P1CBW) OR BLACK (P1CBB) POWER CORD; MOUNTS TO 4X4 OCTAGON J-BOX (BY OTHERS)	6"	STATIC WHITE	DM1: 0-10V DIM 1%	WIRE DIAGRAM ON PAGE 7

WIRE DIAGRAM:

WIRE LABEL TABLE		
CONTROL	WIRE COLOR	LABEL
ALL	WHITE(CORD)	LED(+)
ALL	BLACK(CORD)	LED(-)
ALL	BLACK(DRIVER)	LINE VOLTAGE
ALL	WHITE(DRIVER)	NEUTRAL
ALL	GREEN(DRIVER)	GROUND
ALL	RED(DRIVER)	LED(+)
ALL	BLUE(DRIVER)	LED(-)
DM1	PURPLE	0-10V (+)
DM1	PINK	0-10V (-)

FIG. 18 – WIRE LABEL TABLE



SEE GENERAL NOTE 7 ON PAGE 1

FIG. 19 – WIRE DIAGRAM

OCL Architectural Lighting

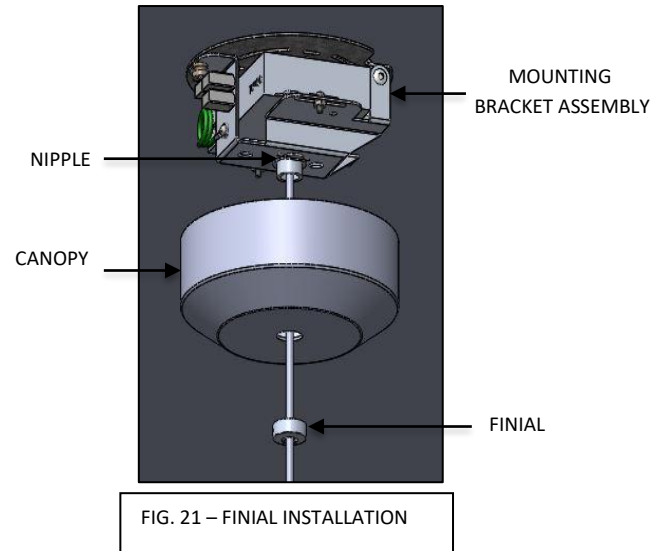
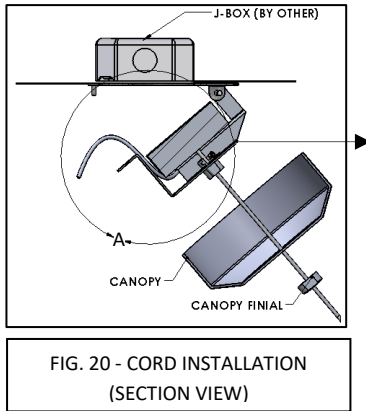
Phone: 314.863.1895

Fax: 314.863.3278

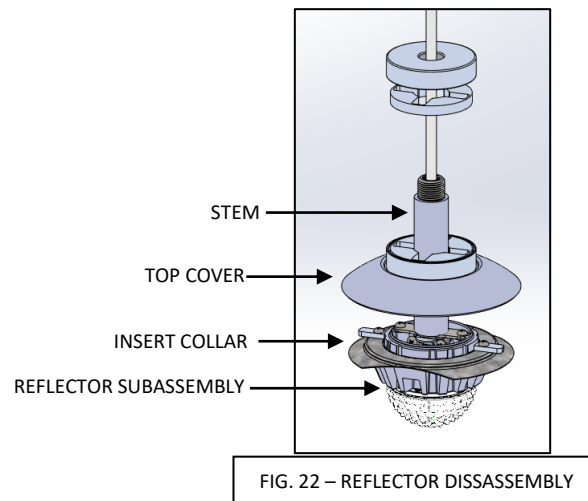
www.oclighting.com

XXX-P1CBX-LED-INSTALLATION-INSTRUCTIONS

11. Swing DRIVER MOUNTING BRACKET back over and secure it with KNURLED NUT removed in STEP 2.
12. Raise CANOPY and secure to ceiling by threading the FINIAL to the NIPPLE (in MOUNTING BRACKET ASSEMBLY) as shown below in FIG. 20 and FIG. 21.



13. Lift TOP COVER from the REFLECTOR ASSEMBLY as shown below in FIG. 22. Be careful not to scratch the finish.



OCL Architectural Lighting

Phone: 314.863.1895

Fax: 314.863.3278

www.ocl.com

XXX-P1CBX-LED-INSTALLATION-INSTRUCTIONS

14. Tilt and insert the REFLECTOR ASSEMBLY through the ACRYLIC GLOBE as shown in FIG. 23.
15. Make sure that ACRYLIC SHADE is properly seated onto the INSERT COLLAR and then slide the TOP COVER UNTHREADED COLLAR and the bottom ACOUSTIC HOLDER back down as shown below in FIG. 24.

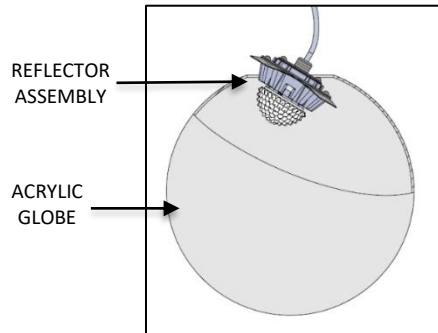


FIG. 23 – ACRYLIC GLOBE
INSTALLATION

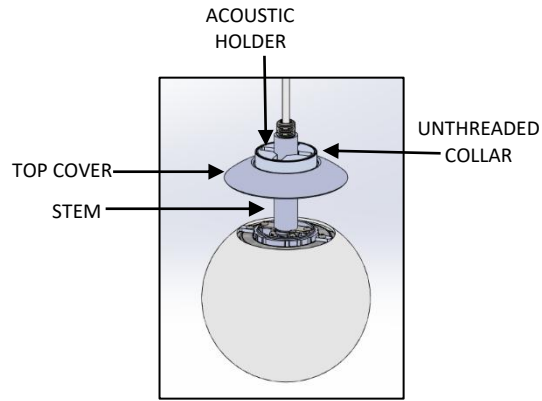


FIG. 24 – ACOUSTIC HOLDER
INSTALLATION

16. Raise the upper ACOUSTIC HOLDER and THREADED COLLAR and insert ACOUSTIC FINS into lower ACOUSTIC HOLDER as shown in FIG. 25.
17. With all ACOUSTIC FINS slotted into the lower ACOUSTIC HOLDER, insert the ACOUSTIC FIN tabs into the upper ACOUSTIC HOLDER as shown in FIG. 26. Ensure all fins are properly slotted into place and then screw on THREADED COLLAR onto STEM.

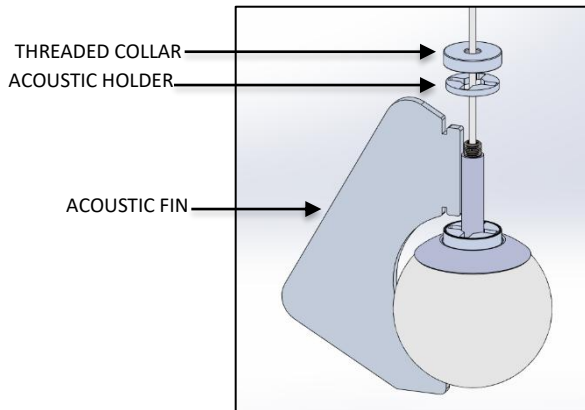


FIG. 25 – ACOUSTIC FIN
INSTALLATION

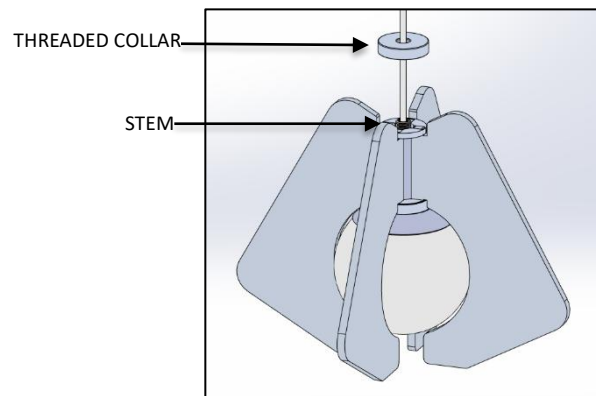


FIG. 26 – ACOUSTIC FIN
INSTALLATION

XXX-P1CBX-LED-INSTALLATION-INSTRUCTIONS

18. Restore power to circuit the ATLA series pendant is connected to.
 - a. Test to ensure that the luminaire turns on after power is restored.
 - b. Contact OCL for any luminaire troubleshooting if a problem occurs.

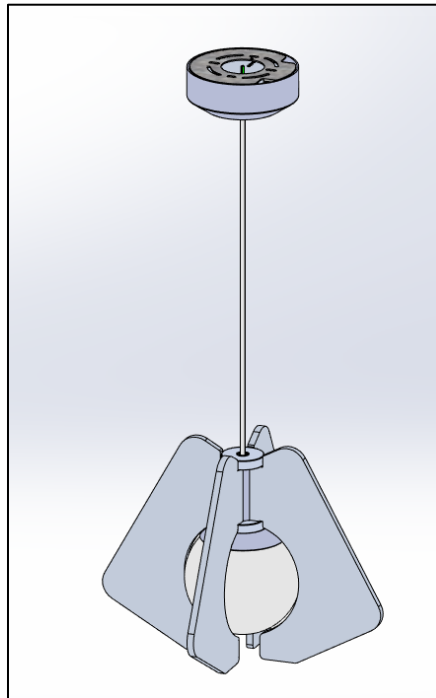


FIG. 27 - COMPLETED INSTALLATION OF ATLA PENDANT
WITH P1CBX HANGING SYSTEM
AA2-P1CBX-6-GW-XXX-XXX-LEDX_XXK-UNV-XXX-DM1-
XXX